

New Youth Assertive Community Treatment (ACT), Children's Community Residence (CCR), and Residential Treatment Facility (RTF) Application



There is a new application and process for applying for OMH Youth ACT, CCRs, and RTFs levels of care!

Here is what you need to know:

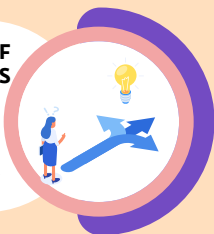


KNOW HOW TO IDENTIFY A YOUTH'S CHILDREN'S SINGLE POINT OF ACCESS (C-SPOA)

Referrals for these programs will be submitted directly to the youth's C-SPOA. C-SPOAs can be identified by visiting [Conference of Local Mental Hygiene Directors](#) or e-mailing [OMH](#).

FAMILIARIZE YOURSELF WITH THE PROGRAM TYPES

Program descriptions for caregivers, program descriptions for providers, and program maps are available upon request to the youth's C-SPOA or [OMH](#).

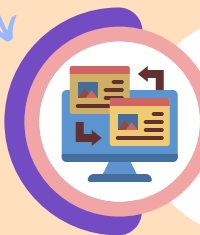


FAMILIARIZE YOURSELF WITH HOW TO COMPLETE THE NEW APPLICATION

Step-by-step recorded tutorials are available for the C-SPOA Part 1 and Part 2 applications. Request a copy from the youth's C-SPOA or [OMH](#).

FAMILIARIZE YOURSELF WITH THE NEW PROCESS

A step-by-step recorded webinar is available. It covers making referrals, the C-SPOA's role and the pre-admission process. Contact [OMH](#) for a copy!



KNOW HOW TO REQUEST A COPY OF THE NEW APPLICATION

The C-SPOA Part 1 and Part 2 for accessing Youth Act, CCR, and RTF services may be requested from the youth's C-SPOA or [OMH](#).